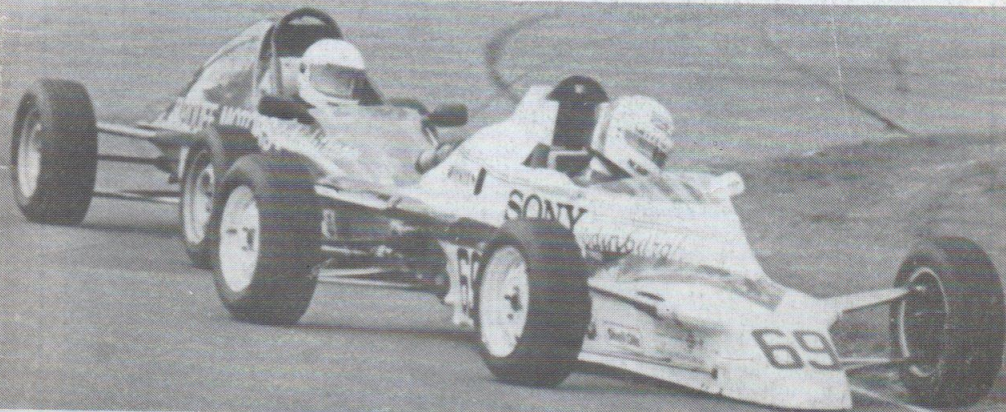
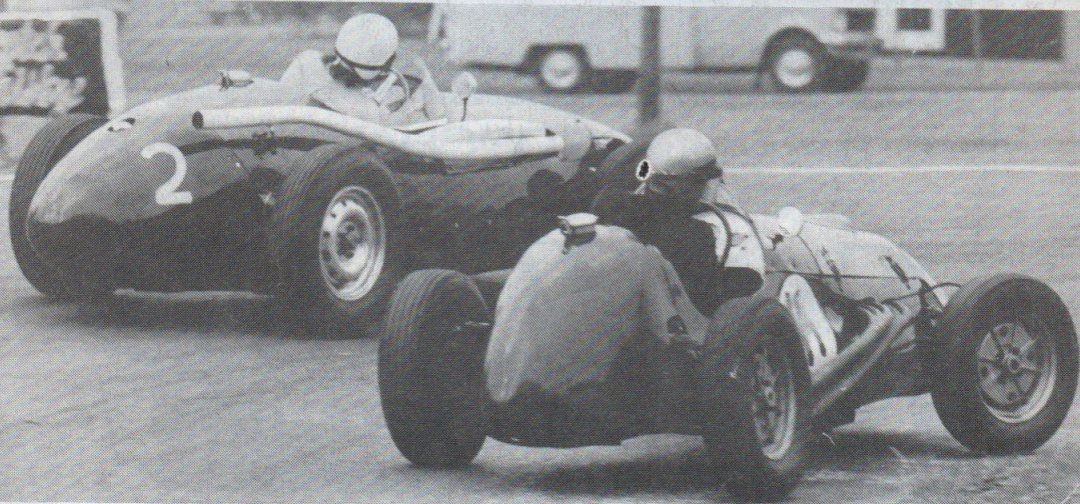


INGLISTON

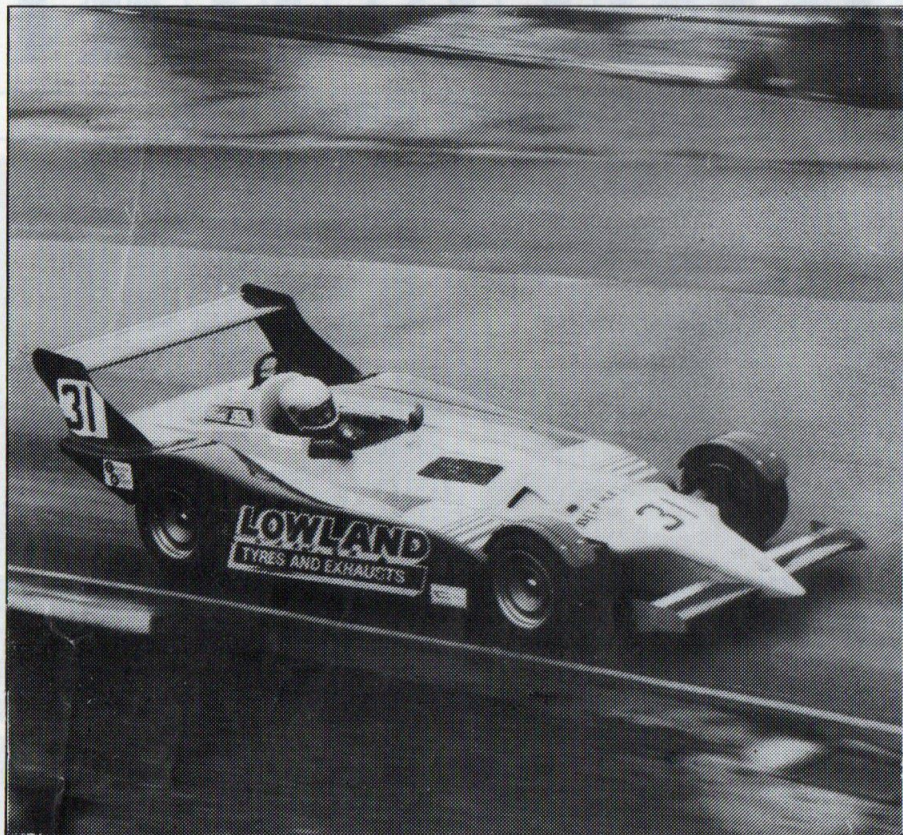
INGLISTON RACE CIRCUIT LTD.



**SUNDAY, 17th APRIL,
1988**



Organised by
THE SCOTTISH MOTOR RACING CLUB LTD.
OFFICIAL PROGRAMME — 50p
For Conditions of Admission see inside



THE CHOICE OF CHAMPIONS

LOWLAND
TYRES AND EXHAUSTS

81-91 Dundee Street, Edinburgh EH11 1AW
Telephone 031-229 2297.

INGLISTON

INGLISTON RACE CIRCUIT LTD.

INGLISTON RACE CIRCUIT LTD.

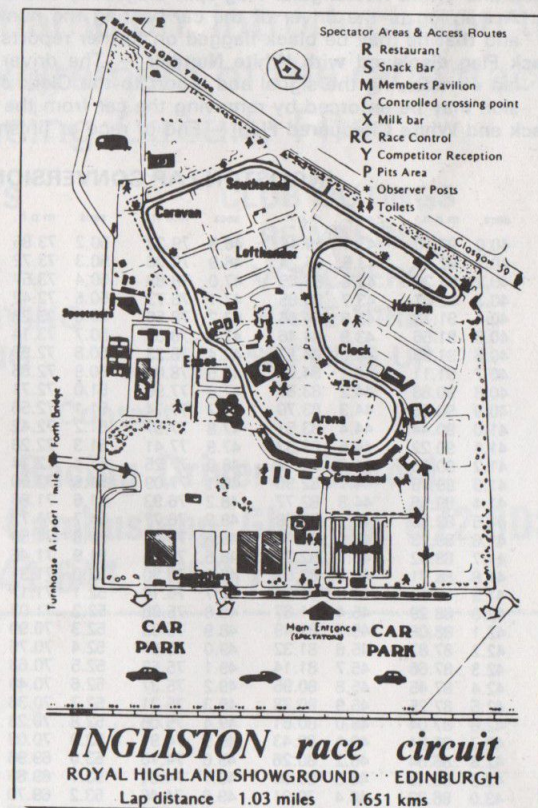
17th APRIL, 1988

OFFICIALS AND CREDITS

Steward for RAC: R. B. Horn; Clerk of the Course: W. Fenwick; Chairman of Race Committee: H. McCaig; Secretary of Meeting: B. Buss; Chief Marshal: J. Robertson; Chief Observer: K. MacRae; Chief Flag Marshal: N. Clarke; Chief Track Marshal: W. Wilkie; Chief Medical Officer: Dr S. Brydon; Chief Paddock Marshal: G. McDonald; Chief Spectator Marshal: J. T. Redpath; Chief Grid Marshal: G. Montgomery; Starters: W. Struth, L. Haggart; Chief Pits Area Marshal: A. Harvey; Chief Timekeeper: Dr L. Jamieson; Chief Scrutineer: I. D. Bennie; Chief Steward: J. L. Romanes; Stewards for the Club: E. R. Herrald, A. H. B. Craig, J. A. Dick Peddie, J. McMillan, W. Stein, R. Traill; First Aid: British Red Cross Society (Scottish Branch); Breakdown Equipment Staff: S.M.T., Ashfield Motors, Glasgow, Rosebank Recovery Service; Public Address: Kennedy of Lanark; Tyre Services: Lowland Tyres & Exhausts.

This meeting is held under the International Sporting Code of the FIA, the General Competition Rules and Standing Supplementary Regulations of the RAC, and the additional regulations and instructions issued by SMRC Ltd. Permit No. 10298.

WARNING TO THE PUBLIC — Car and Motorcycle Racing is dangerous and persons attending this track do so entirely at their own risk. It is a condition of admission that all persons having any connection with the promotion and/or organisation and/or conduct of the meeting, including the owners of the land and the drivers and owners of the vehicles and passengers in the vehicles, are absolved from all liability arising out of accidents causing damage or personal injury (whether fatal or otherwise) however caused to spectators, ticket holders or officials.



1988 RACE DATES

15th May
17th July
14th August
4th September
25th September
16th October

FLAG SIGNALS

Races at Ingliston except the Historic Car event, are now started by Red/Green lights over the circuit. But also signalling to the drivers is by the use of flags round the circuit. The meaning of these signals is as follows:

Blue Flag, stationary — Another competitor is following you close by.

Blue Flag, waved — Another competitor is trying to overtake you.

White Flag — A service car or slow moving car is on the circuit.

Yellow Flag, stationary — Danger, no overtaking and slow down.

Yellow Flag, waved — Great danger, slow down, be prepared to stop. No overtaking.

Yellow Flag with Red Stripes, stationary — Slippery surface ahead.

Yellow Flag with Red Stripes, waved — Slippery surface imminent.

Green Flag — All clear, at the end of a danger area controlled by yellow flags. It can also be used to signal the start of a warm-up lap.

Black Flag — Immediately stop racing and proceed slowly and with maximum caution to pits or start line obeying marshal's instructions, and being prepared to stop should the track be blocked.

Black Flag at individual marshal's posts. The race has been stopped.

Black Flag with Orange Disc displayed with White Number — A warning of apparent mechanical failure or of a fire which might not be obvious to the driver. The car concerned *must* call at its pit for repairs on the next lap.

Black and White Rectangular Flag split diagonally and displayed with a White Number — A warning to the driver of the car bearing the number that his behaviour is suspect and that he may be black-flagged on further reports.

Black Flag displayed with White Number — The driver must stop at his pit within one lap of receiving the signal and report to the Clerk of the Course. A penalty of exclusion may be enforced by removing the car from the race by display of the black flag.

Black and White Chequered Flag — End of race or finish.

INGLISTON LAP CONVERSION TABLE

| secs | m.p.h. | secs | m.p.h. | secs | m.p.h. | secs | m.p.h. | secs | m.p.h. | secs | m.p.h. |
|------|--------|------|--------|------|--------|------|--------|------|--------|------|--------|
| 40.0 | 92.70 | 43.4 | 85.44 | 46.8 | 79.23 | 50.2 | 73.86 | 53.6 | 69.18 | 57.0 | 65.05 |
| 40.1 | 92.47 | 43.5 | 85.24 | 46.9 | 79.06 | 50.3 | 73.72 | 53.7 | 69.05 | 57.1 | 64.94 |
| 40.2 | 92.24 | 43.6 | 85.05 | 47.0 | 78.89 | 50.4 | 73.57 | 53.8 | 68.92 | 57.2 | 64.83 |
| 40.3 | 92.01 | 43.7 | 84.85 | 47.1 | 78.73 | 50.5 | 73.42 | 53.9 | 68.79 | 57.3 | 64.71 |
| 40.4 | 91.78 | 43.8 | 84.66 | 47.2 | 78.56 | 50.6 | 73.28 | 54.0 | 68.67 | 57.4 | 64.60 |
| 40.5 | 91.56 | 43.9 | 84.46 | 47.3 | 78.39 | 50.7 | 73.14 | 54.1 | 68.54 | 57.5 | 64.49 |
| 40.6 | 91.33 | 44.0 | 84.27 | 47.4 | 78.23 | 50.8 | 72.99 | 54.2 | 68.41 | 57.6 | 64.38 |
| 40.7 | 91.11 | 44.1 | 84.08 | 47.5 | 78.06 | 50.9 | 72.85 | 54.3 | 68.29 | 57.7 | 64.26 |
| 40.8 | 90.88 | 44.2 | 83.89 | 47.6 | 77.90 | 51.0 | 72.71 | 54.4 | 68.16 | 57.8 | 64.15 |
| 40.9 | 90.66 | 44.3 | 83.70 | 47.7 | 77.74 | 51.1 | 72.56 | 54.5 | 68.04 | 57.9 | 64.04 |
| 41.0 | 90.44 | 44.4 | 83.51 | 47.8 | 77.57 | 51.2 | 72.42 | 54.6 | 67.91 | 58.0 | 63.93 |
| 41.1 | 90.22 | 44.5 | 83.33 | 47.9 | 77.41 | 51.3 | 72.28 | 54.7 | 67.79 | 58.1 | 63.82 |
| 41.2 | 90.00 | 44.6 | 83.14 | 48.0 | 77.25 | 51.4 | 72.14 | 54.8 | 67.66 | 58.2 | 63.71 |
| 41.3 | 89.78 | 44.7 | 82.95 | 48.1 | 77.09 | 51.5 | 72.00 | 54.9 | 67.54 | 58.3 | 63.60 |
| 41.4 | 89.56 | 44.8 | 82.77 | 48.2 | 76.93 | 51.6 | 71.86 | 55.0 | 67.42 | 58.4 | 63.49 |
| 41.5 | 89.35 | 44.9 | 82.58 | 48.3 | 76.77 | 51.7 | 71.72 | 55.1 | 67.30 | 58.5 | 63.38 |
| 41.6 | 89.13 | 45.0 | 82.40 | 48.4 | 76.61 | 51.8 | 71.58 | 55.2 | 67.17 | 58.6 | 63.28 |
| 41.7 | 88.92 | 45.1 | 82.22 | 48.5 | 76.45 | 51.9 | 71.45 | 55.3 | 67.05 | 58.7 | 63.17 |
| 41.8 | 88.71 | 45.2 | 82.04 | 48.6 | 76.30 | 52.0 | 71.31 | 55.4 | 66.93 | 58.8 | 63.06 |
| 41.9 | 88.50 | 45.3 | 81.85 | 48.7 | 76.14 | 52.1 | 71.17 | 55.5 | 66.81 | 58.9 | 62.95 |
| 42.0 | 88.29 | 45.4 | 81.67 | 48.8 | 75.98 | 52.2 | 71.03 | 55.6 | 66.69 | 59.0 | 62.85 |
| 42.1 | 88.08 | 45.5 | 81.49 | 48.9 | 75.83 | 52.3 | 70.90 | 55.7 | 66.57 | 59.1 | 62.74 |
| 42.2 | 87.87 | 45.6 | 81.32 | 49.0 | 75.67 | 52.4 | 70.76 | 55.8 | 66.45 | 59.2 | 62.64 |
| 42.3 | 87.66 | 45.7 | 81.14 | 49.1 | 75.52 | 52.5 | 70.63 | 55.9 | 66.33 | 59.3 | 62.53 |
| 42.4 | 87.45 | 45.8 | 80.96 | 49.2 | 75.37 | 52.6 | 70.49 | 56.0 | 66.21 | 59.4 | 62.42 |
| 42.5 | 87.25 | 45.9 | 80.78 | 49.3 | 75.21 | 52.7 | 70.36 | 56.1 | 66.10 | 59.5 | 62.32 |
| 42.6 | 87.04 | 46.0 | 80.61 | 49.4 | 75.06 | 52.8 | 70.23 | 56.2 | 65.98 | 59.6 | 62.21 |
| 42.7 | 86.84 | 46.1 | 80.43 | 49.5 | 74.91 | 52.9 | 70.09 | 56.3 | 65.86 | 59.7 | 62.11 |
| 42.8 | 86.64 | 46.2 | 80.26 | 49.6 | 74.76 | 53.0 | 69.96 | 56.4 | 65.74 | 59.8 | 62.01 |
| 42.9 | 86.43 | 46.3 | 80.09 | 49.7 | 74.61 | 53.1 | 69.83 | 56.5 | 65.61 | 59.9 | 61.90 |
| 43.0 | 86.23 | 46.4 | 79.91 | 49.8 | 74.46 | 53.2 | 69.70 | 56.6 | 65.51 | 60.0 | 61.80 |
| 43.1 | 86.03 | 46.5 | 79.74 | 49.9 | 74.31 | 53.3 | 69.57 | 56.7 | 65.40 | 60.1 | 61.69 |
| 43.2 | 85.83 | 46.6 | 79.57 | 50.0 | 74.16 | 53.4 | 69.44 | 56.8 | 65.28 | 60.2 | 61.59 |
| 43.3 | 85.63 | 46.7 | 79.40 | 50.1 | 74.00 | 53.5 | 69.31 | 56.9 | 65.17 | 60.3 | 61.49 |

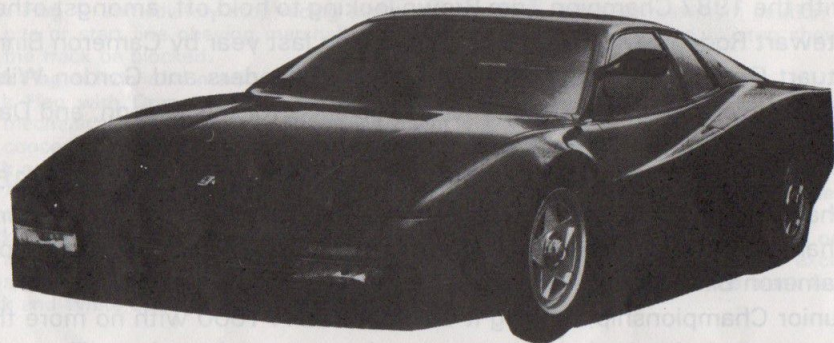
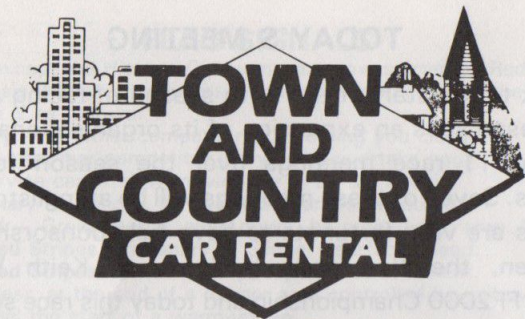
TODAY'S MEETING

Welcome back to the start of the 24th season of racing at Ingliston. For SMRC this season sees an expansion of its organisational activities with the running of 11 race meetings over the season for the Scottish Championships. Seven of these meetings will be at Ingliston. The Scottish Championships are very fortunate to have full sponsorship this year.

Silverscreen, the Newcastle business of Keith Wickham, are sponsoring the FF2000 Championship and today this race sees a good entry with the 1987 Champion Tom Brown looking to hold off, amongst others, Stewart Roden, Ian Forrest in the car driven last year by Cameron Binnie, Stuart Gray and Robert Thomson. Harvey Gillanders and Gordon Wilson both move from FF1600 last year to this class for this season, and David Heeps in Tom Brown's old car is a new face at Ingliston.

Both MacAndrews for Citroën who sponsor the Senior Scottish FF1600 Championship and Tom Brown Racing School, who sponsor the Junior Championship, return to help us this year. Last year senior champion Cameron Binnie is racing in this class again, but a revised format for the Junior Championship, making it only open to FF1600 with no more than two years racing in that class means that a new champion will emerge.





Ford Fiesta 950L



Peugeot 309 GL



Peugeot 205 GTI



Cobra



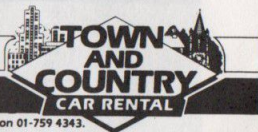
Lamborghini Countach QV

*Just mention this advertisement
for a Discount.*

*Tariffs available from our minibus
situated behind the Grandstand.*

The best value in Town. The widest range in the Country.

HEATHROW LONDON GATWICK WATFORD ABERDEEN EDINBURGH EDINBURGH AIRPORT MANCHESTER MANCHESTER AIRPORT PRESTWICK GLASGOW BRISTOL BIRMINGHAM LEEDS/BRADFORD NEWCASTLE LEICESTER PLYMOUTH STANSTED



All major credit cards accepted. Offices throughout the UK. Call Central Reservations on 01-759 4343.

INGLISTON

INGLISTON RACE CIRCUIT LTD.

S.M.R.C.

SCOTTISH MOTOR RACING CLUB LTD.

Ingliston, Sunday, 17th April, 1988

Promoted by
INGLISTON RACE CIRCUIT LTD.

Organised by
SCOTTISH MOTOR RACING CLUB LTD.

PROGRAMME AND TIMETABLE

| Event No. | Event Time | Practice No. | Practice Time | Scrutiny before | EVENT |
|-----------|------------|--------------|---------------|-----------------|--|
| | 1.35 | | | | PARADE OF SERVICE VEHICLES |
| 1 | 1.45 | 1 | 9.00 | 8.30 | ROAD SALOONS UP TO 1600 cc |
| 2 | 2.05 | 2 | 9.20 | 8.50 | GT CARS |
| 3 | 2.30 | A3 B4 | 9.40 10.00 | 9.10 9.30 | FF1600 CARS (20 slowest from practice) |
| 4 | 2.50 | 5 | 10.20 | 9.50 | ROAD SALOONS OVER 1600 cc |
| 5 | 3.10 | 6 | 10.40 | 10.10 | CLUBMANS AND SPORTS CARS |
| 6 | 3.35 | 7 | 11.00 | 10.30 | ROAD SPORTS CARS |
| 7 | 3.55 | 8 | 11.20 | 10.50 | FF2000 CARS |
| 8 | 4.20 | 10 | 12.00 | 11.30 | HISTORIC HANDICAP |
| 9 | 4.45 | | | | FF1600 CARS |
| 10 | 5.05 | 9 | 11.40 | 11.10 | MODIFIED CARS |
| | 8.30 | | | | MARSHALS SIGN ON |
| | 1.30 | | 8.45 | | ALL MARSHALS ON POSTS |
| | 12.40 | | | | DRIVERS' BRIEFING |

EVENT

1

ROAD SALOON CARS UP TO 1600 c.c.

| | | | | |
|-----|-----------------------------------|-----------------|------|-------------|
| 143 | RAY MACDOWALL/E.C.M. Ltd. | Fiesta | 1600 | Carlisle |
| 150 | IAN COWIE | Toyota Corolla | 1600 | Edinburgh |
| 151 | ALAN KEITH | Fiesta | 1600 | Montrose |
| 153 | JONATHAN GILBERT | Fiesta | 1600 | Edinburgh |
| 154 | KENNETH HARKINS | Mini | 1312 | Newbridge |
| 155 | ALISTAIR McCARTER | Austin Cooper S | 1340 | Culloden |
| 158 | GLEN MORTIMER/The Body Shop | Fiesta | 1600 | Edinburgh |
| 168 | SIMON EWING | Avenger | 1598 | Milngavie |
| 173 | IAN FRASER/The Milne Group | Imp | 998 | Helensburgh |
| 174 | GEOFF WILLIAMS | Mini Cooper 'S' | 1275 | Edinburgh |
| 175 | IAN THOMSON/Chivas Regal | Fiesta | 1600 | Cardross |
| 176 | EDWARD McNEILAGE | Nova | 1300 | Kilcraggan |
| 183 | J. LINDSAY MANN | Avenger | 1600 | Currie |
| 183 | R. A. McKINNA/Manor Garage Racing | MG Metro | 1300 | West Linton |
| 197 | GEORGE McDONALD | Escort | 1600 | Banchory |

Class Lap Record: R. MacDowall, 57.9 secs, 64.04 mph, 19/7/87.

1st..... 2nd..... 3rd.....

Practice 1

1.45 p.m.
12 laps

EVENT

2

TOWN & COUNTRY CAR RENTALS GT CHAMPIONSHIP RACE.

| | | | | |
|-----|--|------------------|----------|-------------|
| 45 | IAN FOREST/Drambuie Liqueur Co. | Drambuie Imp | (S) 998 | Kirkliston |
| 100 | OLLY ROSS | Davrian Mk 7/8 | (S) 998 | Helensburgh |
| 105 | BRIAN FLETCHER | Davrian Mk8 | (S) 998 | Mintlaw |
| 106 | RON CUMMING/Simpson Motors, Breachin/Claymore Shellfish | Lotus Esprit | (L) 3400 | Breachin |
| 107 | KENNY COLEMAN | Esprit | (S) 998 | Airdrie |
| 112 | KEN MURRAY | Davrian | (S) 998 | Fraserburgh |
| 111 | STEVEN JEFFRIES | Davrian | (S) 998 | Hopeman |
| 113 | ROD MACLEOD | Maguire Stiletto | (S) 998 | Tullibody |
| 116 | COLIN PHILIP | Imp | 998 | Ardersier |
| 117 | BRIAN MACLEOD | Maguire Stiletto | (S) 998 | Invergordon |

S=Up to 1000 c.c.; L=Over 1000 c.c.

Class Lap Record: S, I. Forrest, 50 secs; L, J. McGaughay, 46.3 secs.

1st..... 2nd..... 3rd.....

Practice 2

2.05 p.m.
12 laps

EVENT

3

FF1600 CARS (20 slowest from practice).
A ROUND IN THE MACANDREWS FOR CITROËN AND THE TOM BROWN RACING
SCHOOL CHAMPIONSHIPS.

| | | | | |
|----|--|------------------|----------|-------------------|
| 48 | TOM BROWN | Van Diemen RF79 | (A) 1600 | Cambuslang |
| 50 | STUART THORBURN | Van Diemen | (A) 1600 | Duns |
| 51 | TOM NEIL | Van Diemen 12F84 | (A) 1600 | Forth |
| 54 | COLIN LOW | Crossle 62F | (A) 1600 | Linlithgow |
| 58 | STEPHEN FORSYTH | Royale RP 33M | (A) 1600 | Aberdeen |
| 61 | DAVID PARK/Design Fittings Ltd. | Van Diemen RF78 | (A) 1600 | Washington |
| 65 | DAVID TAYLOR | Laser | (A) 1600 | Linlithgow |
| 67 | PHILIP HUBERT | Quest FF85 | (A) 1600 | Carlisle |
| 68 | TOMMY PEARSON | PRS RHO2 | (A) 1600 | Linlithgow |
| 69 | CAMERON BINNIE/Sony Centre/ Silverscreen/Border Reivers | Van Diemen RF86 | (A) 1600 | Cornhill-on-Tweed |
| 70 | LOUIS DI RESTA | Van Diemen RF88 | (A) 1600 | Whitburn |
| 75 | ALISTAIR TAYLOR | Van Diemen RF84 | (B) 1600 | Larbert |
| 76 | COLIN HARPER | Van Diemen RF85 | (B) 1600 | Peterhead |
| 78 | BRYAN GOWANS | Van Diemen | (B) 1600 | Dalbeattie |
| 80 | TONY GEMMELL/Fallon | Van Diemen | (B) 1600 | Cosham |
| 81 | JAMES ARGO | Van Diemen | (B) 1600 | Wishaw |
| 85 | EWAN BUCHAN | Reynard | (B) 1600 | Livingston |
| 87 | STEVEN HALDANE | Mondiale M88S | (B) 1600 | Grangemouth |
| 89 | GRAHAM BRUNTON | Van Diemen RF85 | (B) 1600 | Edinburgh |
| 91 | COLIN BIRKBECK | Van Diemen | (B) 1600 | Penrith |
| 93 | NORMAN McLENNAN | Van Diemen RF85 | (B) 1600 | Orkney |
| 95 | ANGUS McPHERSON | Van Diemen | (B) 1600 | Edinburgh |
| 99 | GEORDIE TAYLOR/Lawrence of Kemnay | Van Diemen RF85 | (B) 1600 | Kemnay |

Class Lap Record: C. Binnie, 51.1 secs, 72.56 mph, 19/7/87.

1st..... 2nd..... 3rd.....

2.30 p.m.
12 laps

EVENT

4

ROAD SALOON CARS OVER 1600 c.c.

| | | | | |
|-----|---|-----------------|------|----------------|
| 145 | IAN GARDNER/Aitken Motorsport/ Ava Turbo Systems | BMW 745i | 3500 | Glasgow |
| 152 | STEVEN MILLER | Escort | 1993 | Perth |
| 157 | JOHN McINTYRE | Chevette | 2300 | Helensburgh |
| 165 | DUNCAN CHARNELL | Escort RS Turbo | 1600 | Dumfries |
| 167 | ANDREW JEFFREY/Specialist Cars, Aberdeen | VW Golf | 1890 | Currie |
| 177 | TOM BELL | Sierra Cosworth | 2000 | Carlisle |
| 178 | ALASTER CUNNINGHAM | Opel Manta | 2400 | Edinburgh |
| 181 | TOM McCALLUM | Capri | 2994 | West Linton |
| 192 | DAVE MADDOCK | Chevette | 2300 | Livingston |
| 193 | D. FERGUSON/Ferguson Seacabs | Lotus Sunbeam | 2200 | Banchory |
| 198 | IAN GORDON | VW Golf | 1781 | Bridge of Earn |

Class Lap Record: H. Chalmers, 55.2 secs.

1st..... 2nd..... 3rd.....

Practice 5

2.50 p.m.
12 laps

EVENT

5

LOWLAND TYRES & EXHAUSTS SPORTS CAR CHAMPIONSHIP RACE.

| | | | | |
|----|--|--------------|----------|----------------|
| 24 | JOHN FYDA/Agra Engineering | Vision | (A) 1700 | |
| 26 | KEITH BOWMAKER | Mallock 20B | (A) 1700 | |
| 32 | ALEX DOBBIE | Mallock Mk24 | (A) 1700 | Inverurie |
| 33 | W. CARR/Glenaber | Mallock Mk16 | (B) 1600 | Leslie |
| 35 | REG FORESTER SMITH/Marquiss Recovery Vehicles | Mallock 23 | (B) 1600 | Annan |
| 37 | ANDY SMITH | Mallock Mk27 | (B) 1600 | Troon |
| 39 | BILL WOOD | Mallock 27SC | (A) 1700 | Edinburgh |
| 42 | MIKE UPTON | Mallock 16 | (B) 1600 | Bridge of Earn |
| 44 | ERIC PATERSON | Vision V87 | (A) 1700 | Edinburgh |

A='A' Clubman; B='B' Clubman; S=Sports.

Class Lap Records: 'A', J. Fyda, 45.1 secs, 82.22 mph; 'B', A. Smith, 49.4 secs, 75.06 mph; S, K. 45.4 secs, 81.67 mph.

1st..... 2nd..... 3rd.....

Practice 6

3.10 p.m.
12 laps

EVENT

6

ROAD SPORTS CARS

| | | | | |
|-----|---|----------------|----------|--------------|
| 120 | BILL STEVENS/Albany Reprographics | Caterham 7 | (S) 1600 | Glasgow |
| 121 | COLIN ELSTROP | Triumph GT6 | (L) 1998 | Consett |
| 122 | KEITH SCOTT/Scott Vehicle Services | Dutton Phaeton | (L) 3528 | Edinburgh |
| 123 | DOUGIE ANDERSON | Dutton Phaeton | (L) 3100 | Wishaw |
| 125 | RUSSELL PATERSON/Clarendon Office Cleaning | Westfield 7SE | (S) 1598 | Edinburgh |
| 127 | KENNY McGLYNN | Dutton Phaeton | (S) 1600 | Lochgilthead |
| 128 | JOHN PEACE/Stonecraft Fireplaces | Ginetta G27 | (L) 2100 | Tranent |
| 129 | RADDY SARAFILOVIC | Westfield 7 | (S) 1600 | Bearsden |
| 130 | GORDON CLARKE | Sylva | (S) 1598 | Milngavie |
| 132 | NEIL GAMMIE | Westfield SEI | (S) 1600 | Montrose |
| 133 | ALLAN MCGREGOR/Restore-a-Stone | Caterham 7 | (S) 1600 | Bearsden |
| 135 | GRAHAM CARR | Dutton | (L) 2998 | Amble |
| 140 | PETER JEFFREY | Lotus Europa | (L) 1800 | Ellon |
| 144 | DAVID HARKES | Ultima | (L) 2664 | Edinburgh |

S=Up to 1600 cc; L=Over 1600 cc.

Class Lap Records: H. Ogilvie, 56.2 secs, 65.98 mph, 10/5/87; R. Ealand/B. Hill, 58.4 secs, 63.49 mph, 6/ & 21/4/85.

1st..... 2nd..... 3rd.....

Practice 7

3.35 p.m.
12 laps

EVENT

7

SILVERSCREEN FF2000 CHAMPIONSHIP RACE.

| | | | | |
|---|---|------------------|------|-------------------|
| 1 | TOM BROWN | Reynard SF88 | 2000 | Cambuslang |
| 5 | ROBIN BROWN | 2BR Reynard SF86 | 2000 | Linlithgow Bridge |
| 6 | KEITH WHICKHAM/Silverscreen | Reynard SF86 | 2000 | Newcastle |
| 7 | IAN FORREST/Novafone | Reynard SF86 | 2000 | Kirkliston |
| 8 | STUART GRAY/MacTaggart & Mickel Ltd. | Reynard 87SF | 2000 | Edinburgh |

Practice 8

| | | | | |
|----|---|--------------|------|------------|
| 9 | STEWART RODEN/ANC (Scotland) Ltd. | Reynard | 2000 | Winchburgh |
| 14 | DAVID HEEPS | Reynard | 2000 | Lochgelly |
| 15 | ROY LOW | Swift | 2000 | Linlithgow |
| 16 | SCOTT GOODFELLOW | Lola T582 | 2000 | Falkirk |
| 18 | ROY WILSON | Reynard SF81 | 2000 | Dingwall |
| 19 | HARVEY GILLANDERS | Swift | 2000 | Peterhead |
| 20 | DAVID DUFFIELD/Lowland Tyres & Exhausts | Reynard SF86 | 2000 | Kirkliston |
| 22 | J. ROBERT THOMSON | Reynard | 2000 | Edinburgh |
| 23 | GORDON WILCOX/Formula One Motor Sport | Van Diemen | 2000 | Renfrew |

Class Lap Record: C. Stenhouse, 47.5 secs, 78.06 mph.

1st..... 2nd..... 3rd.....

3.55 p.m.
12 laps

EVENT

8

LOTHIAN CHEMICAL COMPANY HISTORIC SERIES HANDICAP RACE.

| | | | | | |
|----|------------------------------------|---------------------|------|------|-------------|
| 7 | DENIS RAMSAY | H.A.R. V8 | 1957 | 2600 | Stirling |
| 8 | MARTIN DUNN/Charles Munro | Vixen V8 IV | 1967 | 998 | Alness |
| 12 | PETER GRAHAM | 16 hp Riley Special | 1935 | 2443 | Blackford |
| 16 | BRIAN HOPKINS | Morgan +4 | 1959 | 1991 | Caldercruix |
| 18 | THOMAS RICHARDSON | Riley Brooklands | 1928 | 1098 | Kirkcaldy |
| 19 | STUART ADAMSON | Morgan +4 | 1964 | 2138 | Carrbridge |
| 20 | CHRIS CHILCOTE | Fraser Nash | 1926 | 1496 | Aberdeen |
| 22 | KEITH SCOTT/Scott Vehicle Services | MG B | 1963 | 1798 | Edinburgh |
| 23 | JOCK MACKINNON | Riley 9 | 1930 | 1087 | Edinburgh |
| 69 | JOHN FOSTER | Jaguar XK120 | 1950 | 3442 | Leuchars |

1st..... 2nd..... 3rd.....

Practice 10

4.20 p.m.
10 laps

EVENT

9

FF1600 CARS.
A ROUND IN THE MACANDREWS FOR CITROËN AND THE TOM BROWN RACING SCHOOL CHAMPIONSHIPS.

ENTRIES TAKEN FROM EVENT 3

1st..... 2nd..... 3rd.....

4.45 p.m.
12 laps

EVENT

10

SPORTSTUNE MODIFIED SALOONS & SPORTS CARS CHAMPIONSHIP RACE.

| | | | | | |
|-----|--|-------------------|----|------|-------------|
| 100 | OLLY ROSS | Davrian Mk7/8 | Sp | 998 | Helensburgh |
| 111 | STEVEN JEFFRIES | Davrian | Sp | 998 | Hopeman |
| 120 | BILL STEVENS/Albany Reprographics | Caterham 7 | Sp | 1600 | Glasgow |
| 125 | RUSSELL PATERSON/Clarendon Office Cleaners | Westfield 7SE | Sp | 1598 | Edinburgh |
| 129 | RADDY SARAFILOVIC | Westfield 7 | Sp | 1600 | Bearsden |
| 130 | GORDON CLARKE | Sylva | Sp | 1598 | Milngavie |
| 143 | RAY MACDOWALL/ECM | Fiesta | Ss | 1600 | Carlisle |
| 144 | DAVID HARKES | Ultima | Sp | 2664 | Edinburgh |
| 157 | JOHN McINTYRE | Chevette | LS | 2300 | Helensburgh |
| 162 | JAMES MACKAY | Davrian Mk8 | Sp | 998 | Edinburgh |
| 163 | BILL EWING | Avenger | Ss | 1598 | Milngavie |
| 170 | HUGH CHALMERS/MF Industrial/Ecurie Ecosse | Opel Manta | SI | 2400 | Edinburgh |
| 174 | GEOFF WILLIAMS | Mini Cooper S | Ss | 1275 | Edinburgh |
| 177 | TOM BELL | Sierra Cosworth | SI | 2000 | Carlisle |
| 181 | TOM McCALLUM | Capri | SI | 2994 | West Linton |
| 192 | DAVE MADDOCK | Vauxhall Chevette | SI | 2300 | Livingston |

Sp=Sports Cars; SI=Saloons over 1600 c.c.; Ss=Saloons under 1600 c.c.

Class Lap Records: Sp, M. Dunn, 52.9 secs; Ss, R. MacDowall, 55.9 secs; SI, H. Chalmers, 52.2 secs.

1st..... 2nd..... 3rd.....

5.05 p.m.
12 laps

It is good to see a number of newcomers again entering this class this year with ex-karter Louis Di Resta, Philip Hubert from Carlisle, Graham Brunton from Edinburgh and Norman McLennan from Orkney amongst them.

The Historic Series this year is being supported by John Romanes' business, Lothian Chemical Co. Ltd., from Granton, and this series is still building its support with 10 cars ranging from 1926 to 1967 taking part. The little Vixen is included as it was the last of a line of Formula 4 cars. The race is run on a handicap basis with practice times determining starting position. There are penalties imposed if any car has too big a difference between practice and race times.

Our long-standing supporter Bill Borrowman from Sportstune has taken over sponsorship of the Modified Sports & Saloon Car Championship and also returns with the sales kiosk opposite the Herdsman's. This race sees the new MF Industrial Ecurie Ecosse Manta in the hands of Hugh Chalmers running against a full field of other modified cars.

The Sports Car Championship is again sponsored by Lowland Tyres & Exhausts who also provide the paddock tyre service at the circuit.

Current champion Andy Smith will be competing today in his B-class car against, amongst others, John Fyda and Eric Paterson, both in A-class Vision cars.

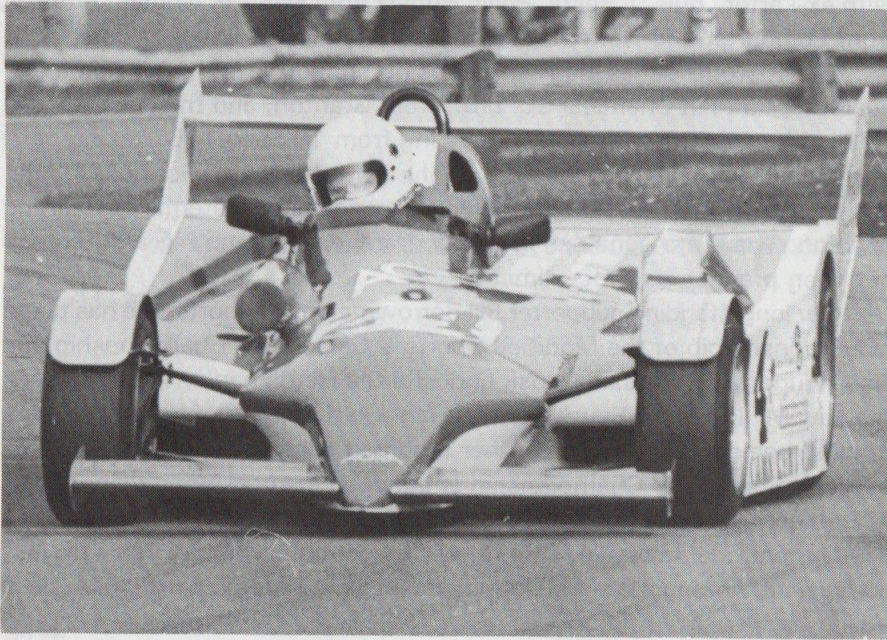
For the second year Town & Country Car Rentals are sponsoring the GT Series, in which current champion Eric Munnoch will not be defending his crown. Ron Cumming in his 3400 Lotus Esprit will probably be at the front of the field but championship points will be fought for in the Up to 1000 cc Class in which the other nine cars are competing.

Following our policy to keep road car classes as friendly as possible there are no championships for these races which see very full grids and close racing.

In the Road Sports car race, kit cars now dominate and it will be of interest to see how the first Ultima to race at Ingliston will do against our experienced other drivers.

The Road Saloon races lose the entry from the Ecurie Ecosse this year as the Opel is only eligible to run in the Modified Car race, but Tom Bell's new Sierra Cosworth will not have a clear run with entries also from Iain Gardner in a BMW 745i and Alastair Cunningham in the old Ecosse Manta and Tom McCallum in the ex-Howard Fowler Capri.

A further change to the championships this year is that in the past the points from one round could be dropped but this year all 11 rounds will count.



LOTHIAN
CHEMICALS LTD

WEST SHORE ROAD, GRANTON, EDINBURGH

031-552 5621/3

Telex: 727261

- We manufacture Formaldehyde for home + export
- We also recover Industrial Solvents + Chemicals

SCOTTISH MOTOR RACING CLUB LIMITED

Registered Office: P.O. BOX 5, 25 Market Square, Duns

24440 Edinburgh VAT Reg. No. 270 4631 74

For Office Use

CB Ref.

Memb. No.

APPLICATION FORM FOR 1988 MEMBERSHIP

PLEASE COMPLETE IN BLOCK CAPITALS THROUGHOUT

Mr/Mrs/Miss
(delete as appropriate) (Christian names) (Surname)

of
(Occupation)

hereby apply for membership of the Scottish Motor Racing Club Limited for the calendar year 1988 and agree, if elected, to be bound by the Memorandum and Articles of Association thereof for the time being.

...../...../198
(Signature, please)

I wish to be considered as a Marshal at Ingliston:
YES/NO (Delete as appropriate)

My Cheque/P.O. is enclosed made up as follows:

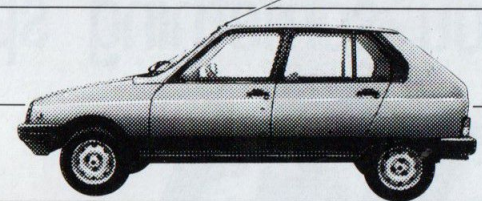
Annual Subscription — Racing Member (£15) £ .
Ordinary Member (£10) £ .
£

Members proposing new members may obtain £2 credit from Club if the following is completed:

Full Member's Name

Full Member's Number

A GREAT



RANGE OF CARS



AND A LOT MORE BESIDES.

- A SUPERLATIVE AFTER-SALES SERVICE
- PAINT AND BODY REPAIRS
- CONTRACT HIRE AND LEASING ON THE CITROEN RANGE

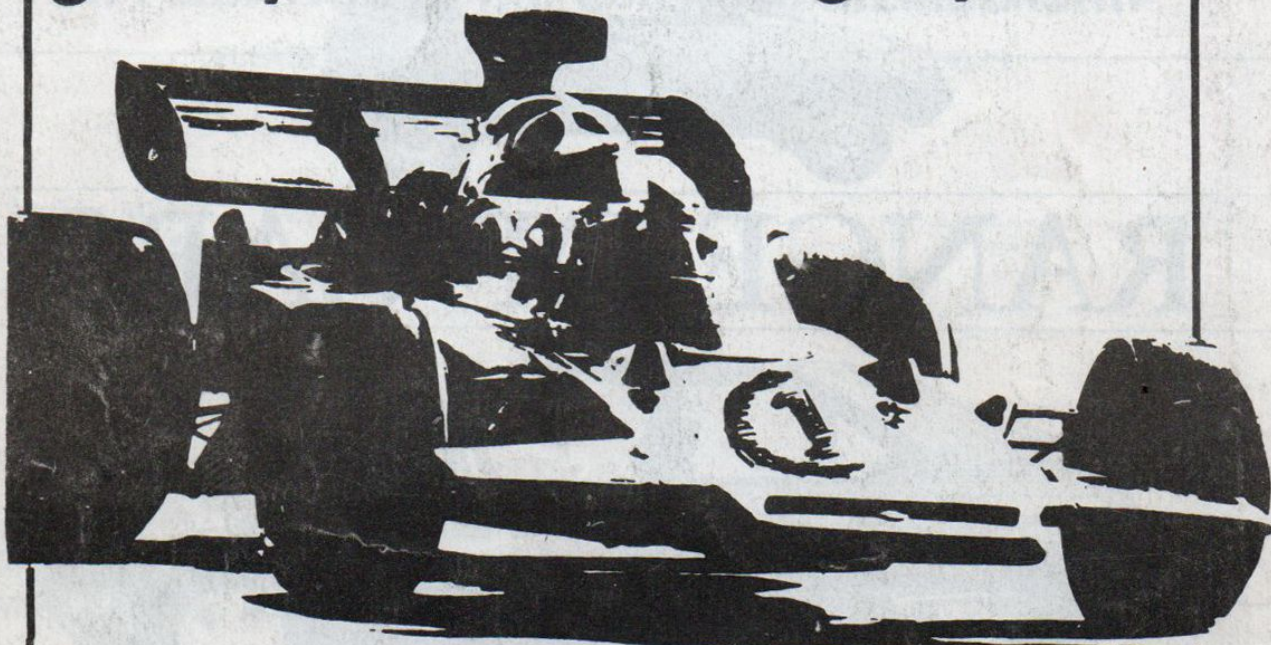


MACANDREW

39 Roseburn St., Edinburgh. Tel: 031-337 4365.
(Opposite Murrayfield Rugby Ground turnstiles.)

SPORTS-TUNE

give you something special



ACCESSORIES ARE OUR BUSINESS

Official factory trained WEBER CARB. Agents & Service Workshops.
DISTRIBUTORS for: Spoilers & Air Dams—'Trans-Am' & 'Droop Snoot'
Wolfrace—Revolution—Mamba—100+—Cobra Slot-Mags. Alloy Wheels.
JANSPEED & PIPER Cams, Inlet & Exhaust Manifolds, Cylinder Heads & Kits
KONI—SPAX—BILSTEIN Competition Shocks & Struts, Competition Springs to suit
PIRANHA & MOBELEC ELECTRONIC IGNITION as used by Works Teams
SEATS BY CORBEAU—BILLOWER—RESTALL Choice of types & colours.
CIBIE LIGHTS, entire range, over 400 in stock at fantastic savings.

AVO FORD TUNING CENTRE : LEYLAND & ROOTES TUNING STOCKISTS

SCOTLAND'S LARGEST STOCKS OF COMPETITION GOODIES. Motolita,
Paddy Hopkirk, Nikki Carb Kits, Sperex Paints, Speedwell, Aleybars, Safety Devices.

OUR PROMISE. LARGEST STOCKS. KEENEST PRICES.

10&11 BRANDON TERRACE

CANONMILLS

EDINBURGH

031-556-3507

The Competition Parts people
who SPONSOR MOTOR SPORT